

PERIMETER

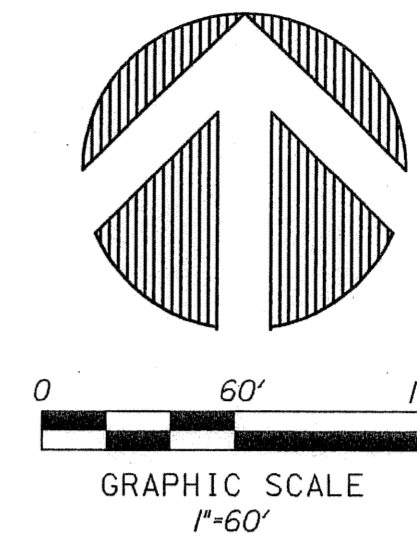
SURVEYING & MAPPING
 Certificate of Authorization No. LB7264
 Prepared by: Jeff S. Hodapp, P.S.M.
 951 Broken Sound Parkway, Suite 320
 Boca Raton, Florida 33487
 Tel: (561) 241-9988
 Fax: (561) 241-5182

BRIELLA P.U.D.

A REPLAT OF ALL OF TRACTS 37, 38, 39, 59 AND 60, BLOCK 55, TOGETHER WITH A PORTION OF TRACT 40, BLOCK 55 AND THE PLATTED 30.00 FOOT WIDE RIGHT-OF-WAY ADJACENT THERETO, ALL OF "PALM BEACH FARMS COMPANY PLAT NO. 3" (P.B. 2, PGS. 45-54, P.B.C.R.), AND A PORTION OF TRACT C, "MIZNER FALLS" (P.B. 91, PGS. 7-14, P.B.C.R.) IN SECTION 28, TOWNSHIP 45 SOUTH, RANGE 42 EAST, PALM BEACH COUNTY, FLORIDA.

DECEMBER, 2005

32



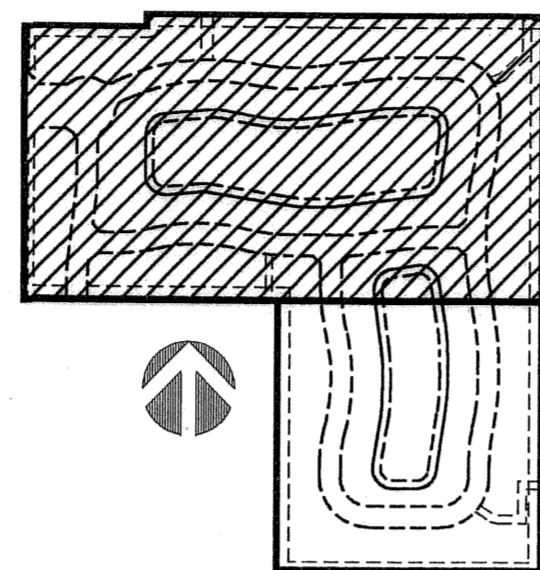
SHEET 2 OF 3

LEGEND:

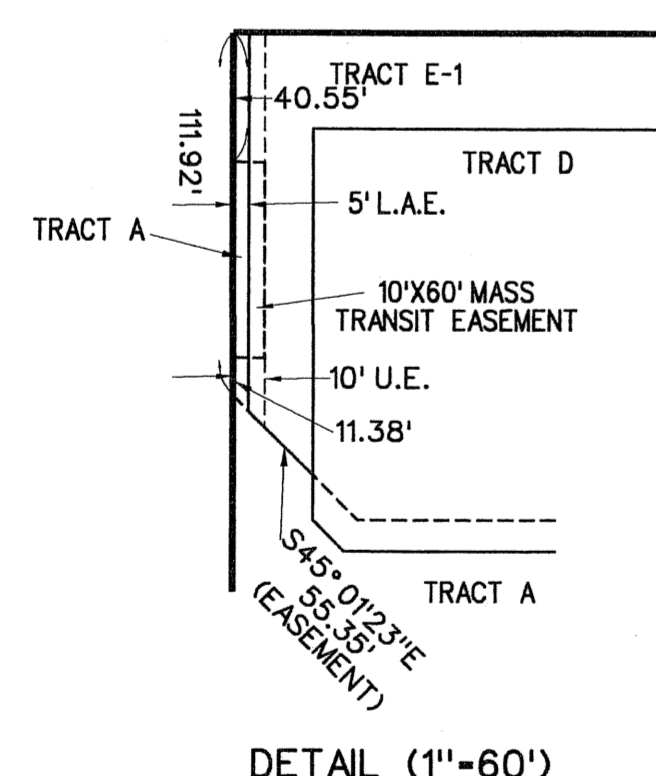
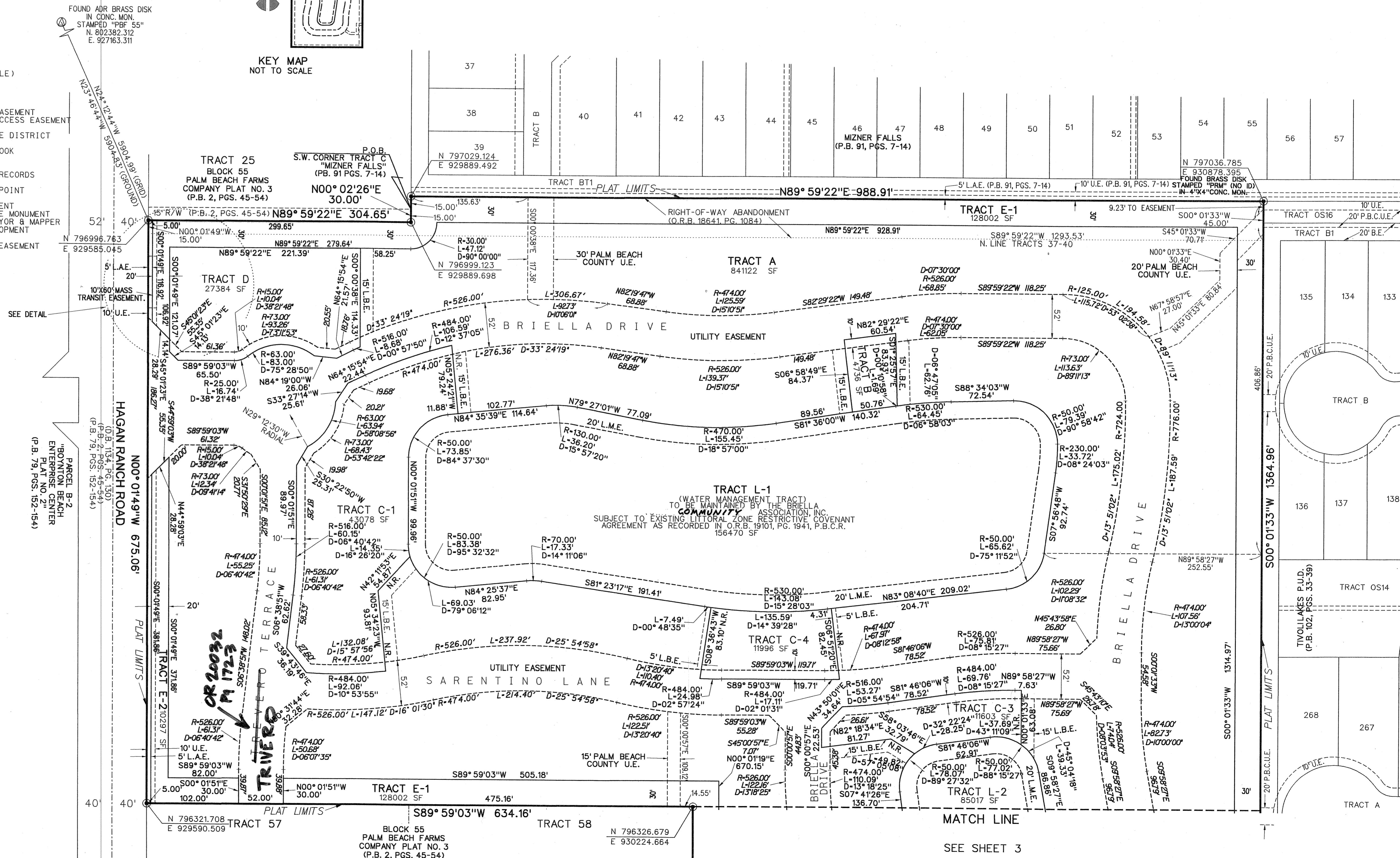
- SET P.R.M. (UNLESS OTHERWISE NOTED) - 4" X 4" CONC. MON. WITH ALUMINUM DISK STAMPED P.R.M. • LB7264
- ⊖ CENTERLINE

ABBREVIATIONS:

- CH CHORD BEARING
- CHB CHORD BEARING
- CONC. CONCRETE
- COR. CORNER
- D DELTA (CENTRAL ANGLE)
- D.E. DRAINAGE EASEMENT
- AR. LENGTH
- L.B. LICENSED BUSINESS
- L.E. LANDSCAPE EASEMENT
- L.M.E. LAKE MAINTENANCE EASEMENT
- L.M.A.E. LAKE MAINTENANCE ACCESS EASEMENT
- L.S. LICENSED SURVEYOR
- L.W.D.D. LAKE WORTH DRAINAGE DISTRICT
- MON. MONUMENT
- O.R.B. OFFICIAL RECORDS BOOK
- N.R. NON-RADIAL
- P.B. PLAT BOOK
- P.B.C.R. PALM BEACH COUNTY RECORDS
- P.G. PAGE
- P.C.P. PERMANENT CONTROL POINT
- P.O.B. POINT OF BEGINNING
- P.O.C. POINT OF COMMENCEMENT
- P.R.M. PERMANENT REFERENCE MONUMENT
- P.S.M. PROFESSIONAL SURVEYOR & MAPPER
- P.U.D. PLANNED UNIT DEVELOPMENT
- R. RADIUS
- R.E.E. ROOF ENCROACHMENT EASEMENT
- R/W RIGHT-OF-WAY
- SEC. SECTION
- S.F. SQUARE FEET
- U.E. UTILITY EASEMENT



KEY MAP NOT TO SCALE



SUBDIVISION BRIELLA
 BOOK 107 FLOOD MAP # 185A
 FLOOD ZONE AH ZONING PD
 QUAD # 50
 SE TAZ 955
 ZIP CODE 33487
 PUD NAME

CR 20032
 P 1723

SEE SHEET 3